

THIS DOCUMENT IS PRELIMINARY AND  
WAS RELEASED FOR THE PURPOSE OF  
REVIEW UNDER THE AUTHORITY OF  
MATT A. GLAZE, P.E., TEXAS NO.  
99253 ON 03/03/23.  
IT IS NOT TO BE RELIED UPON AS A  
COMPLETE ENGINEERING DOCUMENT.

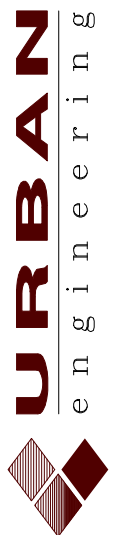
## INDEX OF DRAWINGS

DESCRIPTION	SECTION
COVER SHEET .....	C1
GENERAL NOTES .....	C2
SURVEY LAYOUT & CONTROL .....	C3
9TH STREET IMPROVEMENTS PLAN.....	C4.1 - C4.6
MOORE AVENUE IMPROVEMENTS PLAN.....	C5.1 - C5.5
DETAILS.....	D1.1 - D1.3

*ISSUE*

<input checked="" type="checkbox"/>	PRELIMINARY
<input checked="" type="checkbox"/>	REVIEW
<input type="checkbox"/>	PERMITTING
<input type="checkbox"/>	BIDDING
<input type="checkbox"/>	CONSTRUCTION
<input type="checkbox"/>	

## REVISIONS

[illegible]

2004 N. Commerce, Victoria, Texas 77901 • 361.578.9836  
urbanvictoria.com • TREF# F-160

PROJECT

CoP -  
COMMERCE  
STREET LIFT  
STATION  
PUMP &  
FORCE MAIN  
IMPROVEMENTS

9th STREET & MOORE AVENUE  
PALACIOS, TEXAS

---

*TITLE*

COVER SHEET

<i>DATE</i>	03/03/23
-------------	----------

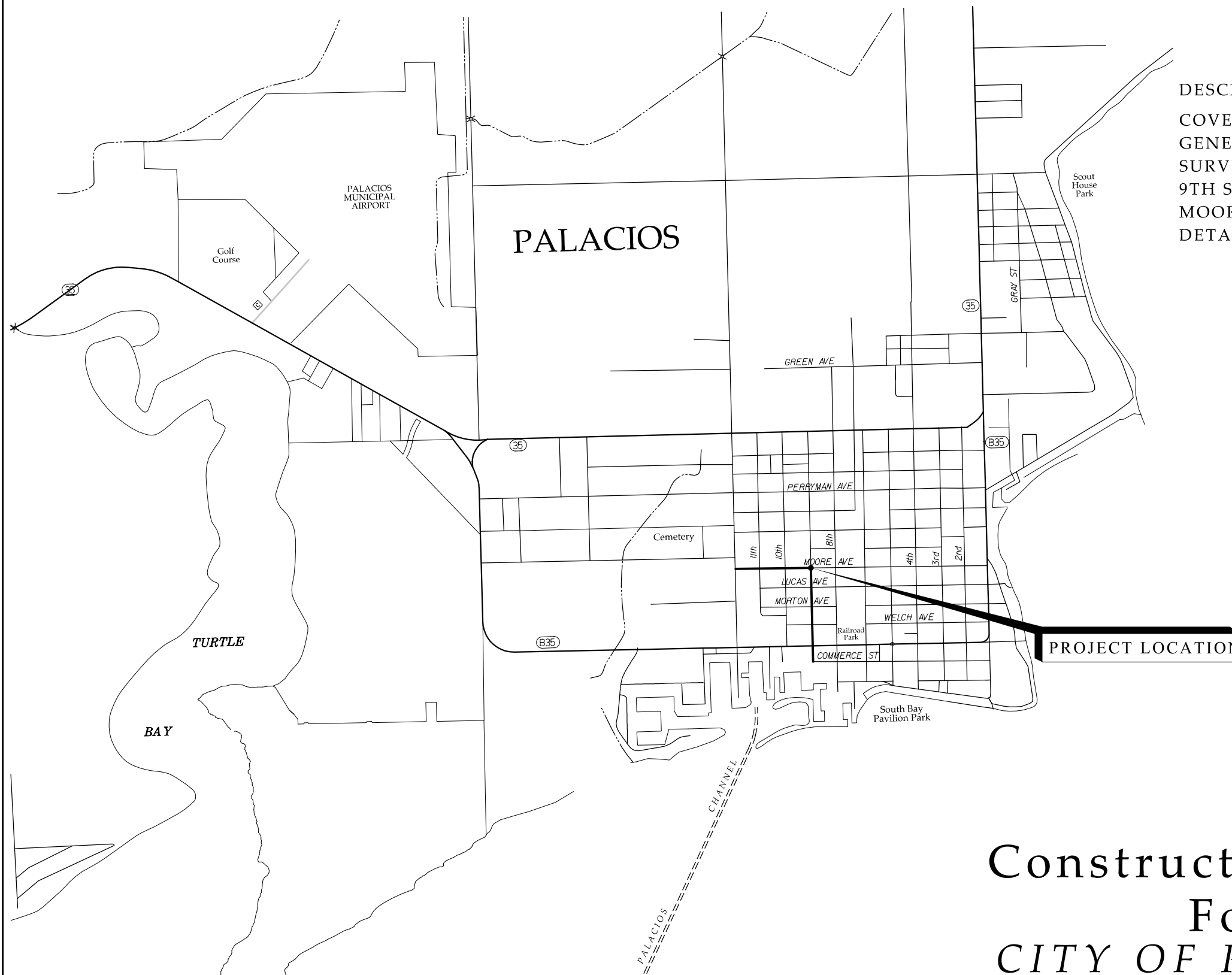
<i>JOB NUMBER</i>	E25481.00
-------------------	-----------

---

*SHEET*

## C1

PAGE 01 of 17



Construction Plans  
For  
*CITY OF PALACIOS*  
*COMMERCE STREET LIFT STATION*  
*PUMP & FORCE MAIN IMPROVEMENTS*

GENERAL NOTES

PRELIMINARY MATTERS

1. THE INSTRUCTIONS GIVEN BY THE NOTES ON THIS SHEET DO NOT CONSTITUTE SEPARATE PAY ITEMS UNLESS SPECIFICALLY INCLUDED IN THE PROPOSAL FORM.

2. ALL CONSTRUCTION SHALL BE IN ACCORDANCE WITH THE TECHNICAL SPECIFICATIONS LISTED IN THE CONTRACT DOCUMENTS & THE STANDARD DETAILS INCLUDED OR REFERENCED IN THE PLANS.

3. ANY CHANGES OR REVISIONS TO THESE PLANS MUST BE SUBMITTED TO THE ENGINEER FOR REVIEW & APPROVAL PRIOR TO IMPLEMENTATION.

4. THE LOCATIONS OF EXISTING UTILITIES SHOWN ON THESE PLANS ARE APPROXIMATE & WERE OBTAINED FROM EXISTING RECORDS & VISIBLE EVIDENCE ON THE GROUND. IT IS EXPECTED THAT THERE MAY BE SOME DISCREPANCIES & OMISSIONS IN THE LOCATIONS & QUANTITIES OF EXISTING UTILITIES & STRUCTURES SHOWN. THE CONTRACTOR SHALL VERIFY THE LOCATION & DEPTH OF ALL KNOWN EXISTING UTILITIES SUFFICIENTLY IN ADVANCE OF CONSTRUCTION SO THAT CONFLICTS CAN BE AVOIDED. WHEN AN EXISTING UTILITY OR UNDERGROUND PIPELINE IS ENCOUNTERED, THAT WAS PREVIOUSLY NOT LOCATED OR INCORRECTLY LOCATED, THE CONTRACTOR SHALL IMMEDIATELY NOTIFY THE ENGINEER & THE APPROPRIATE UTILITY COMPANY TO OBTAIN PROCEDURAL INSTRUCTIONS. THE CONTRACTOR SHALL COOPERATE WITH THE APPROPRIATE UTILITY COMPANY IN MAINTAINING ACTIVE SERVICES IN OPERATION.

5. EXISTING PAVING, BUILDINGS & OTHER ITEMS SHOWN ON PLANS, BUT NOT SPECIFICALLY RELATED TO THE WORK OF THE CONTRACTOR, ARE FOR INFORMATIONAL PURPOSES ONLY & MAY BE SHOWN TO A LESSER ACCURACY OR TO A LESSER DEGREE OF DETAIL THAN THE REMAINDER OF THE PLANS.

6. ELEVATIONS SHOWN ON THE PLAN & FOLLOWED BY A "x" SYMBOL, INDICATE THAT THE ENGINEER'S INTENTION IS TO MATCH THE EXISTING GRADE OF THE TIE-IN PAVEMENT OR STRUCTURE. THE CONTRACTOR SHALL VERIFY THE ELEVATION AT THESE LOCATIONS & NOTIFY THE ENGINEER IMMEDIATELY, IF THE PLAN ELEVATION VARIES SIGNIFICANTLY.

7. WHERE ELEVATIONS ARE SHOWN ON THE PLAN AS "TBD", IT INDICATES THAT THE ELEVATIONS ARE TO BE DETERMINED IN THE FIELD BY THE CONTRACTOR. THIS NOTATION IS TYPICALLY USED FOR BURIED UTILITIES WHO'S ELEVATION COULD NOT BE DETERMINED BY AS-BUILT PLANS, OR PROBING DURING THE DESIGN PHASE OF THE PROJECT. THE CONTRACTOR SHALL EXCAVATE THE UTILITY, DETERMINE THE ELEVATION, AND NOTIFY THE ENGINEER IMMEDIATELY, SO THAT ADJUSTMENTS MAY BE MADE TO THE DESIGN PRIOR TO ORDERING MATERIALS OR SCHEDULING THE WORK.

8. THE OWNER/ENGINEER RESERVE THE RIGHT TO MAKE REASONABLE ADJUSTMENTS IN LINE AND/OR GRADE IN ORDER TO AVOID CONFLICTS WITH OTHER STRUCTURES OR UTILITIES. THE CONTRACTOR AGREES TO MAKE SUCH REASONABLE ADJUSTMENTS AT NO COST TO OWNER OR ENGINEER.

9. EXISTING ELECTRICAL LINES ARE LOCATED CLOSE TO THE PROJECT. THE ATTENTION OF THE CONTRACTOR IS DIRECTED TO THE STATE LAW (VERNON'S ANNOTATED TEXAS STATUTES, ARTICLE 1436(C)) CONCERNING OPERATIONS IN THE VICINITY OF ELECTRICAL LINES & THE NEED FOR EFFECTIVE PRECAUTIONARY MEASURES.

10. THE MUNICIPALITY SHALL PERFORM ALL OPERATION INVOLVING OPENING & CLOSING OF VALVES ON EXISTING PUBLIC WATER MAINS. THE CONTRACTOR SHALL VERIFY MAINS ARE DEAD BEFORE PERFORMING WORK ON EXISTING MAINS.

NOTIFICATION REQUIREMENTS

1. THE CONTRACTOR SHALL GIVE A MINIMUM OF 72 HOURS NOTICE TO THE OWNER, ENGINEER & PERSONS IN CHARGE OF PRIVATE & PUBLIC UTILITIES AFFECTED BY HIS OPERATIONS PRIOR TO COMMENCEMENT OF WORK.

2. AT LEAST 48 HOURS PRIOR TO COMMENCING ANY ACTIVITY FOR A TCEQ REGULATED SANITARY SEWER AND/OR WATER COLLECTION SYSTEM(S), THE CONTRACTOR SHALL NOTIFY THE LOCAL TCEQ's REGIONAL OFFICE, IN WRITING, OF THE DATE ON WHICH CONSTRUCTION WILL BEGIN.

3. AT LEAST 48 HOURS PRIOR TO BEGINNING CONSTRUCTION THE CONTRACTOR IS REQUIRED TO NOTIFY TEXAS ONE CALL AT 1-800-245-4545.

4. THE CONTRACTOR SHALL NOTIFY LOCAL EMERGENCY SERVICES (I.E. FIRE, E.M.S. & POLICE) OF ANY CONSTRUCTION ACTIVITIES THAT WOULD AFFECT THE NORMAL FLOW OF TRAFFIC.

5. THE CONTRACTOR SHALL GIVE A MINIMUM OF 48 HOURS NOTICE TO THE ENGINEER & AUTHORIZED TESTING LABORATORY PRIOR TO REQUIRED TESTS.

6. THE CONTRACTOR SHALL GIVE A MINIMUM OF 48 HOURS NOTICE TO THE ENGINEER & THE OWNER PRIOR TO TESTING OF SANITARY SEWER & WATER LINES. INSPECTION BY THE MUNICIPALITY IS REQUIRED FOR ALL TESTING OF SANITARY SEWER & WATER LINES.

CONTRACTOR'S RESPONSIBILITIES

1. THE CONTRACTOR SHALL IMMEDIATELY NOTIFY THE OWNER & THE ENGINEER OF ANY DISCREPANCIES, ERRORS, OR OMISSIONS, DISCOVERED IN THE FIELD OR ON THE PLANS.

2. THE CONTRACTOR SHALL IMMEDIATELY NOTIFY THE OWNER & THE ENGINEER, VERBALLY & IN WRITING, OF ANY FUEL OR TOXIC MATERIAL SPILLS ONTO THE PROJECT/CONSTRUCTION AREA. THE CONTRACTOR SHALL BE RESPONSIBLE FOR DISPOSING OF FUELS, WASTE MATERIALS & CONTAMINATED EXCAVATIONS IN A LEGALLY APPROVED MANNER.

3. THE CONTRACTOR SHALL COORDINATE INTERRUPTIONS OF ALL UTILITIES & SERVICES WITH APPLICABLE UTILITY COMPANY, OWNER & TENANT. ALL WORK SHALL BE IN ACCORDANCE WITH THE REQUIREMENTS OF THE APPLICABLE UTILITY COMPANY OR AGENCY INVOLVED.

4. THE CONTRACTOR IS RESPONSIBLE FOR MAINTAINING INGRESS & EGRESS FOR ALL PUBLIC & PRIVATE FACILITIES AT ALL TIMES & FOR ALL WEATHER CONDITIONS, UNLESS OTHERWISE INDICATED ON THE PLANS OR APPROVED BY THE ENGINEER.

5. THE CONTRACTOR SHALL BE REQUIRED TO PROVIDE & MAINTAIN ALL NECESSARY WARNING & SAFETY DEVICES (FLASHING LIGHTS, FLAG MEN, BARRICADES, SIGNS, ETC.) TO PROTECT THE PUBLIC SAFETY & HEALTH UNTIL THE WORK HAS BEEN COMPLETED & ACCEPTED BY THE ENGINEER & OWNER. ALL BARRICADING SHALL BE DONE IN COMPLIANCE WITH THE TEXAS MANUAL OF UNIFORM TRAFFIC CONTROL DEVICES.

6. THE CONTRACTOR SHALL MAINTAIN ALL REGULATORY SIGNS DURING THE CONSTRUCTION PERIOD.

7. THE CONTRACTOR SHALL ASSURE HIMSELF THAT ALL CONSTRUCTION PERMITS HAVE BEEN OBTAINED PRIOR TO COMMENCEMENT OF WORK. REQUIRED PERMITS THAT CAN ONLY BE ISSUED TO CONTRACTOR ARE TO BE OBTAINED AT THE CONTRACTOR'S EXPENSE.

8. THE CONTRACTOR IS RESPONSIBLE FOR PROVIDING & MAINTAINING SANITARY FACILITIES ON THIS PROJECT FOR EMPLOYEES.

9. THE CONTRACTOR SHALL MAINTAIN POSITIVE DRAINAGE FLOW IN DITCHES & STORM SEWERS AT ALL TIMES.

GENERAL NOTES

CONTRACTOR'S RESPONSIBILITIES (CONT.)

10. THE CONTRACTOR IS RESPONSIBLE FOR DISPOSING OF ALL EXCESS CONSTRUCTION & WASTE MATERIALS. THE CONTRACTOR SHALL COMPLY WITH ALL APPLICABLE LOCAL, STATE, & FEDERAL REQUIREMENTS REGARDING HANDLING & DISPOSAL OF EXCESS & WASTE MATERIAL. THE CONTRACTOR SHALL PAY PARTICULAR ATTENTION TO AREAS AROUND CONCRETE PAVEMENT & STRUCTURES TO ENSURE THAT CONSTRUCTION DEBRIS IS REMOVED & PROPERLY DISPOSED OF PRIOR TO BACKFILLING & THE APPLICATION OF TOPSOIL. EXCESS SOIL, ROCK OR SPOIL MATERIAL SHALL BE REMOVED FROM THE PROJECT SITE & DISPOSED OF BY THE CONTRACTOR AT HIS EXPENSE.

11. ALL CONSTRUCTION OPERATIONS SHALL BE ACCOMPLISHED IN ACCORDANCE WITH APPLICABLE REGULATIONS OF THE U.S. OCCUPATIONAL SAFETY & HEALTH ADMINISTRATION. COPIES OF OSHA STANDARDS MAY BE PURCHASED FROM THE U.S. GOVERNMENT PRINTING OFFICE. INFORMATION & RELATED REFERENCE MATERIALS MAY BE OBTAINED FROM OSHA, 903 SAN JACINTO, AUSTIN, TEXAS.

12. DESIGN INSTALLATION, MAINTENANCE, & INSPECTION OF TRENCH SAFETY SYSTEMS SHALL BE IN ACCORDANCE WITH THE PROVISIONS OF EXCAVATIONS, TRENCHING & SHORING, FEDERAL OCCUPATION SAFETY & HEALTH ADMINISTRATION (OSHA) STANDARDS, 29CFR, PART 1926, SUBPART P, AS AMENDED, INCLUDING FINAL RULE, PUBLISHED IN THE FEDERAL REGISTER VOL. 209 ON TUESDAY, OCTOBER 31, 1989. TRENCH SAFETY SYSTEMS SHALL ALSO BE IN ACCORDANCE WITH TEXAS HEALTH & SAFETY CODE ANN., 756.021 (VERNON 1991).

13. THE CONTRACTOR SHALL TAKE ALL DUE PRECAUTIONS TO PROTECT EXISTING FACILITIES (INCLUDING BUILDINGS, STRUCTURES, ROADWAYS, PARKING AREAS, DRIVEWAYS, UTILITIES, ETC.) FROM DAMAGE. ANY DAMAGE TO EXISTING FACILITIES INCURRED AS A RESULT OF THE CONSTRUCTION OPERATIONS ARE TO BE REPAIRED IMMEDIATELY BY THE CONTRACTOR TO A CONDITION SIMILAR OR EQUAL TO THAT EXISTING BEFORE THE DAMAGE WAS DONE. REPAIRS SHALL BE MADE TO THE SATISFACTION OF THE FACILITY OWNER & THE ENGINEER AT THE CONTRACTOR'S EXPENSE.

14. THE CONTRACTOR SHALL LOCATE, PROTECT & MAINTAIN BENCHMARKS, MONUMENTS & CONTROL POINTS. THE CONTRACTOR SHALL RE-ESTABLISH DISTURBED OR DESTROYED ITEMS AT HIS EXPENSE. THE RE-ESTABLISHMENT SHALL BE PERFORMED UNDER THE DIRECTION OF A TEXAS REGISTERED PROFESSIONAL LAND SURVEYOR.

15. WATER NECESSARY FOR CONSTRUCTION SHALL BE PROVIDED & PAID FOR BY THE CONTRACTOR. THE CONTRACTOR SHALL ARRANGE FOR A METERED CONNECTION(S) & SHALL PROVIDE THE PROPER EQUIPMENT TO PREVENT CROSS-CONNECTION.

16. THE CONTRACTOR SHALL BE RESPONSIBLE FOR ANY CHARGES ASSOCIATED WITH TEMPORARILY SECURING OR TEMPORARILY RELOCATING POWER POLES THAT INTERFERE WITH THE CONSTRUCTION OPERATIONS. THIS DOES NOT APPLY TO THE PERMANENT RELOCATION OF POWER POLES THAT ARE PHYSICALLY IN CONFLICT WITH THE PROPOSED IMPROVEMENTS.

17. THE CONTRACTOR SHALL CLEAR STREETS, SIDEWALKS, DRIVEWAYS, & PARKING LOTS OF ALL CONSTRUCTION MATERIALS, EQUIPMENT, TRAFFIC CONTROL DEVICES, DIRT, & DEBRIS CAUSED BY CONSTRUCTION AT THE END OF EACH CONSTRUCTION PERIOD. ALL OPEN EXCAVATIONS & PITS MUST BE BARRICADED, FENCED, OR PLATED OVER WHEN NOT IN USE.

18. GRAVITY MAINS SHALL BE INSTALLED IN THE UPSTREAM DIRECTION, BEGINNING AT THE LOWEST POINT IN THE SYSTEM. THE CONTRACTOR IS REQUIRED TO VERIFY THE LOCATION, ELEVATION & CONDITION OF THE ALL CONNECTION POINTS (I.E. UPSTREAM AND DOWNSTREAM) & INVESTIGATE ALL POTENTIAL CONFLICTS WITH EXISTING UNDERGROUND UTILITIES, PRIOR TO BEGINNING THE NEW UTILITY INSTALLATION.

19. UTILITY MAINS MUST BE INSTALLED WITH ADEQUATE COVER TO PREVENT FLOATATION & TO SUPPORT CONSTRUCTION LOADS. THE CONTRACTOR SHALL ENSURE THAT ADEQUATE COVER IS MAINTAINED OVER THE UTILITY DURING CONSTRUCTION. IF ADEQUATE COVER CANNOT BE MAINTAINED, THE CONTRACTOR SHALL UTILIZE CEMENT STABILIZED BACKFILL AND/OR ADDITIONAL TEMPORARY OVERBURDEN TO ACHIEVE THE SAME GOALS.

20. THE CONTRACTOR SHALL PLACE & COMPACT BACKFILL AS PROMPTLY AS PRACTICAL AFTER COMPLETION OF EACH STRUCTURE OR PORTION OF A STRUCTURE. DO NOT, HOWEVER, PLACE BACKFILL AGAINST NEWLY CONSTRUCTED CONCRETE WALLS OR SIMILAR STRUCTURES UNTIL CONCRETE HAS CURED AT LEAST 7-DAYS.

21. UNLESS OTHERWISE NOTED ON PLANS OR IN SPECIFICATIONS, THE CONTRACTOR SHALL PLACE & COMPACT BACKFILL AROUND UTILITY STRUCTURES IN ACCORDANCE WITH APPLICABLE TRENCH ZONE BACKFILL DETAIL FOR UTILITY LINE.

22. ALL DISTURBED AREAS SHALL BE RESTORED TO ORIGINAL OR BETTER CONDITION PRIOR TO ACCEPTANCE OF THE PROJECT.

STORM WATER POLLUTION PREVENTION PLAN

CONTRACTOR SHALL EMPLOY MEASURES AND CONSTRUCTION PRACTICES TO PREVENT EROSION AT OR ADJACENT TO THE PROJECT SITE. THE CONTRACTOR IS SOLELY RESPONSIBLE FOR PROVIDING SW3P MEASURES TO COMPLY WITH THE STORM WATER POLLUTION PREVENTION REQUIREMENTS OF LOCAL, STATE, AND FEDERAL REGULATORY AGENCIES INCLUDING, BUT NOT LIMITED TO, THE TEXAS COMMISSION ON ENVIRONMENTAL QUALITY (TCEQ) AND THE UNITED STATES ENVIRONMENTAL PROTECTION AGENCY (EPA). EROSION CONTROL SHALL BEGIN AT THE ONSET OF THE PROJECT (PRIOR TO MOBILIZATION) AND BE MAINTAINED THROUGHOUT THE DURATION OF THE WORK UNTIL FINAL ACCEPTANCE.

ALL PROJECTS FALL UNDER ONE OF THREE CATEGORIES OF SITE DISTURBANCE DEPENDING UPON THE TOTAL AREA BEING DISTURBED. THE FOLLOWING IS ONLY A BRIEF OVERVIEW OF THE REQUIREMENTS. THE CONTRACTOR SHALL REVIEW TCEQ GENERAL PERMIT NUMBER TXR150000 RELATING TO DISCHARGES FROM CONSTRUCTION ACTIVITIES AND IMPLEMENT ALL REQUIRED MEASURES.

✓

LESS THAN 1 ACRE:

IF THE PROJECT DISTURBS LESS THAN 1 ACRE AND IS NOT PART OF A LARGER COMMON PLAN OF DEVELOPMENT, COVERAGE UNDER GENERAL PERMIT (TXR150000) IS NOT REQUIRED.

PIPE MATERIALS

PUBLIC UTILITIES

1. FORCE MAIN PIPING & FITTINGS FROM THE LIMITS OF THE WET WELL TO THE LIMITS OF THE YARD SHALL BE DUCTILE IRON WITH P-401 LINER IN ACCORDANCE WITH SPECIFICATION SECTION 02610.

2. FORCE MAIN PIPING FROM THE LIMITS OF THE YARD TO THE LIMITS OF THE PROJECT SHALL BE GREEN C900 PVC IN ACCORDANCE WITH STANDARD SPECIFICATION SECTION 02620. FITTINGS SHALL BE DUCTILE IRON WITH P-401 LINER IN ACCORDANCE WITH SPECIFICATION SECTION 02610. PIPE BEDDING AND BACKFILL SHALL BE IN ACCORDANCE WITH STANDARD DETAILS.

LIST OF CONTACTS

COMPANY

URBAN ENGINEERING

CITY OF PALACIOS, PUBLIC WORKS DIRECTOR

TEXAS ONE CALL

DIG TESS, ONE-CALL NOTIFICATION

CONTACT

MATT GLAZE

RYAN ADAMS

-

-

PHONE NUMBER

(361) 578-9836

(361) 972-3605

(800) 245-4545

(800) DIG-TESS

LIST OF ABBREVIATIONS

ABBREVIATIONS

DESCRIPTION

B-B

BACK TO BACK

BC

BACK OF CURB

BM

SURVEY BENCHMARK

CI

CURB INLET

CJ

CONTRACTION JOINT

DCO

DOUBLE CLEAN OUT

EOA

EDGE OF ASPHALT

EOC

EDGE OF CONCRETE

EXIST

EXISTING

EJ

EXPANSION JOINT

FDC

FIRE DEPARTMENT CONNECTION

F-F

FACE TO FACE

FG

FINISHED GRADE

FF

FINISHED FLOOR

FIRE HYD, FH

FIRE HYDRANT

FL

FLOW LINE

FC, FOC

FACE OF CURB

FSR

FOUND STEEL ROD

GI

GRATE INLET

HDPE

HIGH DENSITY POLYETHYLENE

HB

HOSE BIB

LP

LIGHT POLE

L&C

LOCATE & CONNECT

MH

MANHOLE

NG

NATURAL GRADE

NV

NOT VERIFIED

PL

PROPERTY LINE

PP

POWER POLE

PROP

PROPOSED

RCP

REINFORCED CONCRETE PIPE

S.E.T

SLOPED END TREATMENT or SAFETY END TREATMENT

SP

SAMPLE PORT

SAN SWR, SS

SANITARY SEWER

SS CLEANOUT

SANITARY SEWER CLEAN OUT

SS MH

SANITARY SEWER MANHOLE

SSR

SET STEEL ROD

SWR SERVICE, SWR SER

SEWER SERVICE

STM

STORM SEWER

SW

TOP OF SIDEWALK

TBD

TO BE DETERMINED (SEE NOTE 7 OF PRELIMINARY MATTERS)

TC

TOP OF CURB

TEL

TELEPHONE

TG

TOP OF GRATE

TP

TOP OF PAVEMENT

TR

TOP OF RIM

UC

UNDER CONSTRUCTION

UE

UTILITY EASEMENT

WTR

WATER

WV

WATER VALVE

±

INDICATES CONTRACTOR SHALL MATCH EXIST ELEVATION

>>

INDICATES DIRECTION OF FLOW

THIS DOCUMENT IS PRELIMINARY AND WAS RELEASED FOR THE PURPOSE OF REVIEW UNDER THE AUTHORITY OF MATT A. GLAZE, P.E., TEXAS NO. 99253 ON 03/03/23. IT IS NOT TO BE RELIED UPON AS A COMPLETE ENGINEERING DOCUMENT.

ISSUE

☒

PRELIMINARY

☒

REVIEW

☐

PERMITTING

☐

BIDDING

☐

CONSTRUCTION

REVISIONS



PAGE 03 of 17





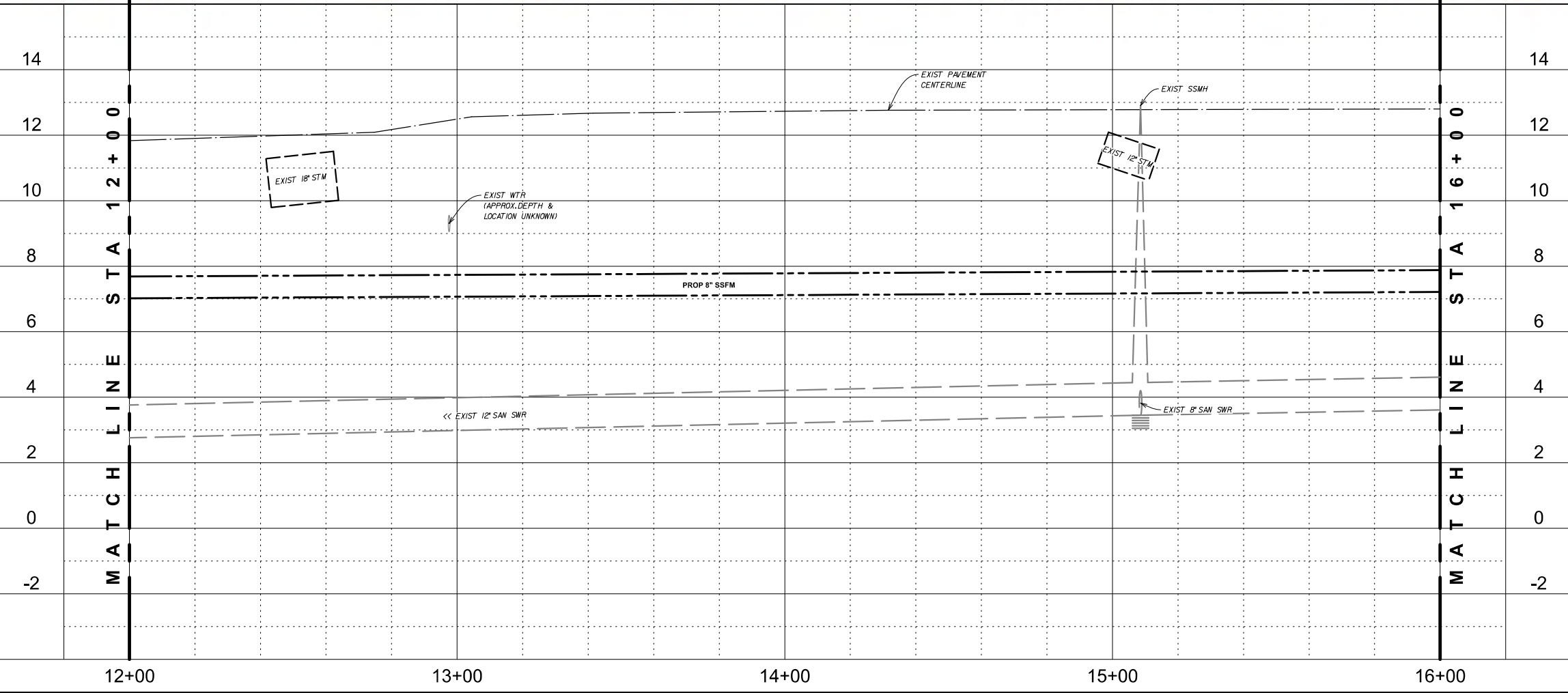












KEYED NOTES		NOT ALL KEYED NOTES MAY APPLY TO THIS SHEET
SANITARY SEWER	1	SANITARY SEWER FORCE MAIN INSTALLED INSIDE STEEL CASING IN ACCORDANCE WITH THE STANDARD DETAILS, INSTALLED BY DRY AUGER BORE ONLY.
	2	SANITARY SEWER FORCE MAIN BENDS IN ACCORDANCE WITH THE STANDARD DETAILS, SIZE INDICATED ON PLAN.
	3	GROUTED SANITARY SEWER CONNECTION IN ACCORDANCE WITH THE STANDARD DETAILS, VERIFY LOCATION & DEPTH OF SANITARY SEWER FOR RECONNECTION, NOTIFY ENGINEER IMMEDIATELY OF ANY DISCREPANCIES.
	4	BORE PIT IN ACCORDANCE WITH THE STANDARD DETAILS, SIZE AS INDICATED ON THE PLAN.
DEMO	A	EXISTING SIGN TO BE REMOVED & REPLACED BY CONTRACTOR.
	B	EXISTING WATER METER TO BE ADJUSTED AND/OR RELOCATED BY CONTRACTOR AS APPROVED AND/OR REQUIRED BY ENGINEER.
	C	EXISTING GUY WIRE TO BE RELOCATED BY OTHERS, CONTRACTOR SHALL COORDINATE AS REQUIRED.
	D	EXISTING FENCE TO BE REMOVED & REPLACED BY CONTRACTOR AS REQUIRED.
GENERAL NOTES		
1. CONTRACTOR SHALL LOCATED EXISTING FORCE MAIN PRIOR TO CONSTRUCTION.		
2. COMMERCE STREET LIFT STATION & EXISTING FORCE MAIN WILL REMAIN IN SERVICE FOR THE DURATION OF CONSTRUCTION AND TESTING. FORCE MAIN CONNECTION WILL BE MADE TO MINIMIZE LOSS OF SERVICE & SHALL BE COORDINATED WITH THE CITY.		

9TH STREET IMPROVEMENTS  
STATION 12+00 - 16+00

GRAPHIC SCALE IN FEET  
0 20 40 60 80

TRUE NORTH

THIS DOCUMENT IS PRELIMINARY AND WAS RELEASED FOR THE PURPOSE OF REVIEW UNDER THE AUTHORITY OF MATT A. GLAZE, P.E., TEXAS NO. 99253 ON 03/03/23. IT IS NOT TO BE RELIED UPON AS A COMPLETE ENGINEERING DOCUMENT.

ISSUE  
☒ PRELIMINARY  
☒ REVIEW  
☐ PERMITTING  
☐ BIDDING  
☐ CONSTRUCTION

REVISIONS

URBAN engineering

2004 N. Commerce, Victoria, Texas 77901 • 361.578.9836  
urbanvictoria.com • TREF# F-160

PROJECT  
CoP -  
COMMERCE  
STREET LIFT  
STATION  
PUMP &  
FORCE MAIN  
IMPROVEMENTS  
9th STREET & MOORE AVENUE  
PALACIOS, TEXAS

TITLE  
9TH STREET  
IMPROVEMENTS  
STATION 12+00  
- 16+00

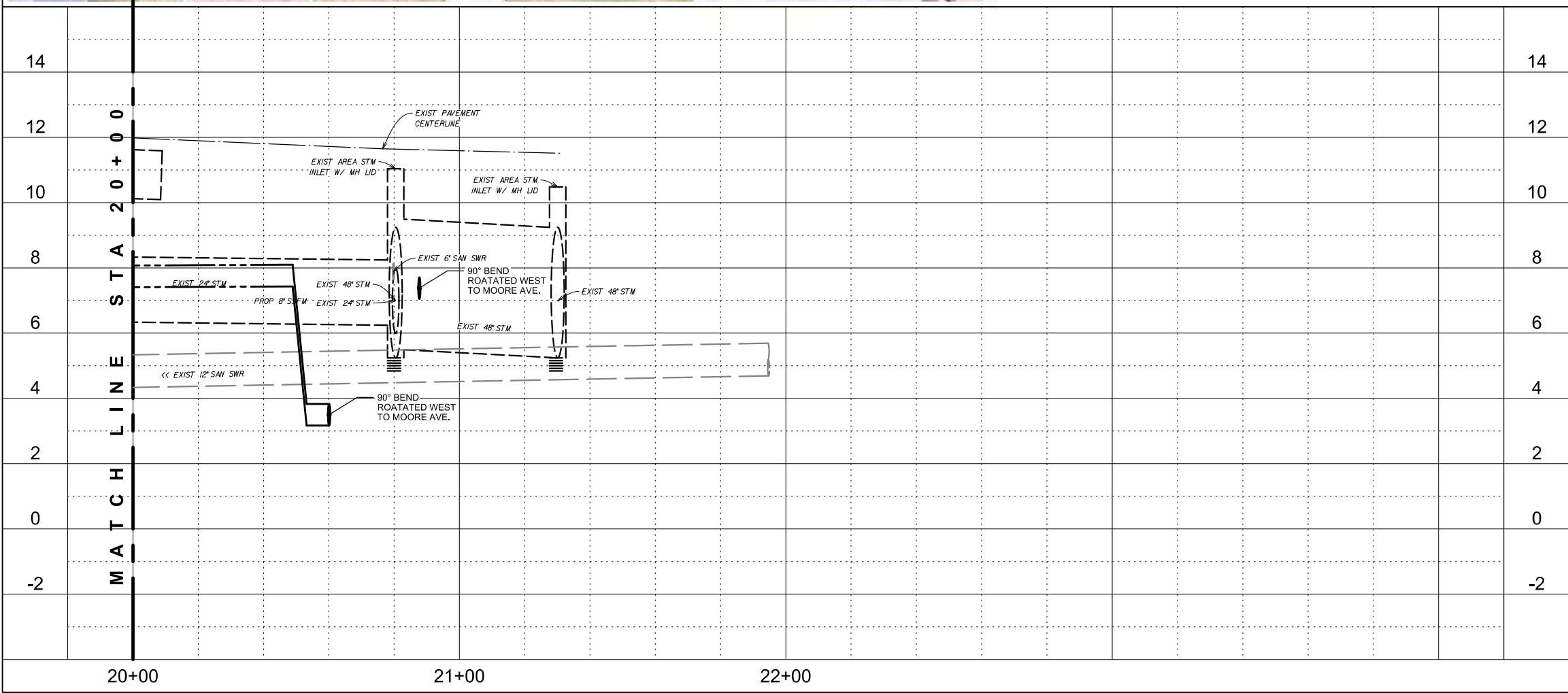
DATE 03/03/23  
JOB NUMBER E25481.00  
SHEET

C4.4  
PAGE 07 of 17









PROJECT	
CoP - COMMERCE STREET LIFT STATION PUMP & FORCE MAIN IMPROVEMENTS	
9th STREET & MOORE AVENUE PALACIOS, TEXAS	
TITLE	
9TH STREET IMPROVEMENTS STATION 20+00 - 22+00	
DATE	03/03/23
JOB NUMBER	E25481.00
SHEET	
C4.6	
PAGE 09 of 17	









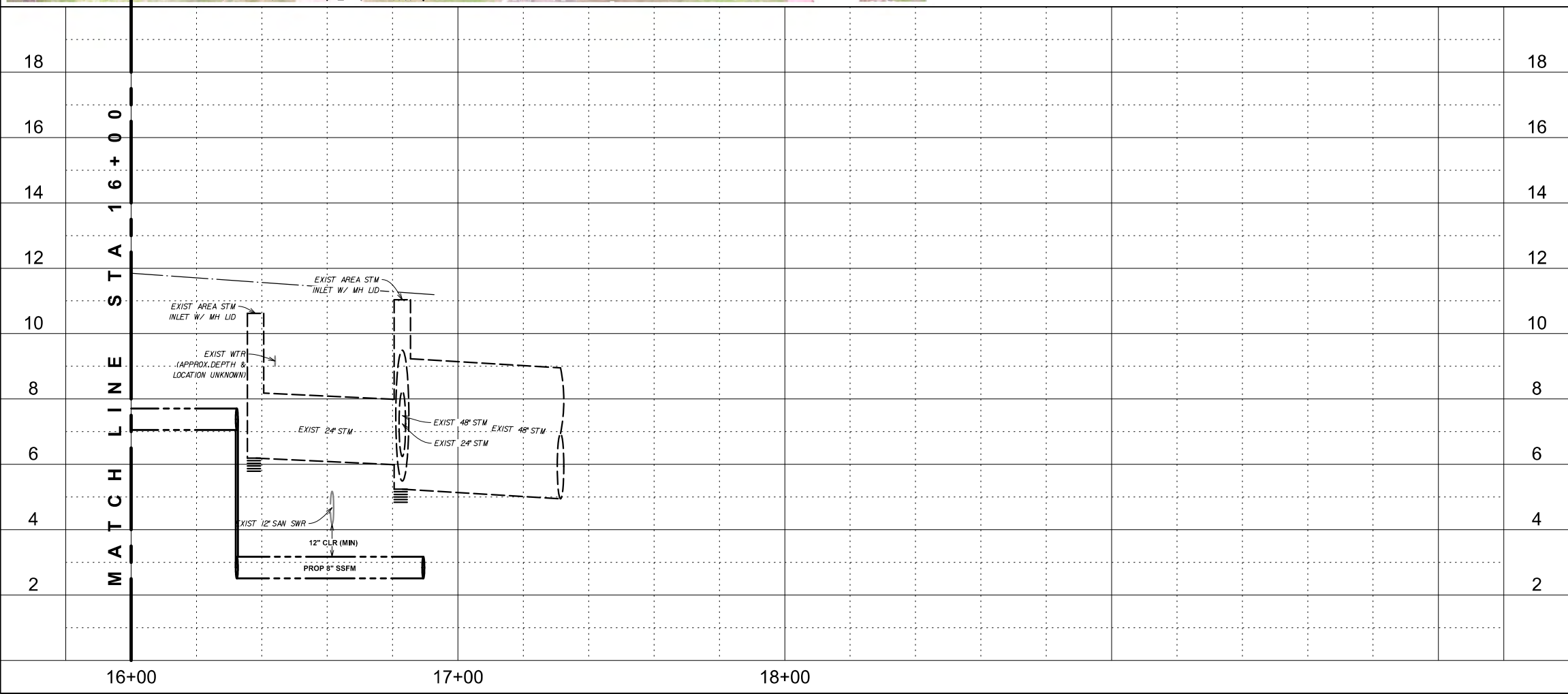












The main drawing area is a large, empty rectangular space, intended for the plan view of the road improvements. It is bounded by a thin black line on the left and bottom, and a dashed line on the right. The stationing range is indicated as 16+00 to 18+00.

## MOORE AVENUE IMPROVEMENTS STATION 16+00 - 18+00

GRAPHIC SCALE IN FEET

A horizontal scale bar with alternating black and white segments. The segments are labeled with the numbers 0, 20, 40, 60, and 80, representing feet.

A circular symbol with a stylized arrow pointing upwards, representing the orientation of the drawing.

TRUE  
NORTH

PROJECT <b>CoP -          COMMERCE          STREET LIFT          STATION          PUMP &amp;          FORCE MAIN          IMPROVEMENTS</b>	
9th STREET & MOORE AVENUE PALACIOS, TEXAS	
TITLE <b>MOORE AVENUE          IMPROVEMENTS          STATION 16+00          - 18+00</b>	
DATE	03/03/2017
JOB NUMBER	E25481.00
SHEET	
<b>C5.5</b> PAGE 14 of 17	





## 2 THRUST RESTRAINT

(VERTICAL OFFSETS)



### 3 THRUST RESTRAINT



## 4 UTILITY LINE EMBEDMENT

(FOR WATER, SANITARY SEWER & STORM SEWER MAINS)

PAGE 15 of 17

## 9 FORCE MAIN CONNECTION







